



STARLINE II LED STREETLIGHT

..... *For Industrial Applications*



www.chalmit.com





Elegant Design, Industrial Strength

Our Starline II LED street lights are designed to provide superior illumination for a wide range of industrial applications from roads to walkways. Featuring a lightweight and robust design, Starline II streetlights offer easy installation and maintenance – all in an elegant, cost effective package.



Mounting Options

The Starline II combines a low profile and lightweight design with multiple mounting options to provide a quick and easy way for customers to make the switch from HID to LED. The variety of mounting options includes; spigot, post-top (slip fitter) and wall mount.

Dark Sky Friendly

Efficiency is high on the agenda with the Starline II LED Streetlight. Designed to provide an asymmetric beam pattern, the Starline II provides efficient roadway illumination and minimises wasted upward light for less light pollution.

Built to Last

Combining a high grade aluminium alloy construction and an extensive ambient range of -40°C to $+55^{\circ}\text{C}$, our streetlight is built to withstand even the toughest industrial conditions. Plus, it's very high LED lifetime of 130,000 hours means this light could last you over 14 years – even if on 24 hours a day.



STARLINE II

LED Streetlight

The **Starline II LED** perfectly combines innovations in heat management, optical performance and energy saving in a sleek exterior.

The ultimate solution to replace traditional HID sources with versatility and reliability. High power LEDs minimise energy and operating costs, while the low profile appearance and low weight allow the Starline II to be safely installed on new and existing infrastructure.

Mounting Options

Post Top/Slip Fitter. Side Entry Spigot. Wall Mount.



Standard Specification

Starline II LED Streetlight	
Enclosure	Die cast aluminum alloy with RAL7031 grey polyester powder coat paint
Entry	Side entry as standard
Termination	Pre-installed flying leads
Installation	Spigot entry (48-60mm OD pole)
Control Gear	Electronic driver
Colour Temperature (CCT)	5000K (Cool White)
Maintenance	Underside access, secured by socket heads
Ingress Protection	IP65 to EN 60529
Surge Protection	6kV
Electrical Supply	120-240V AC 50/60Hz

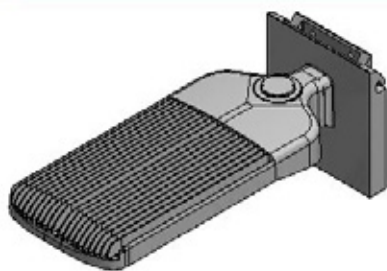
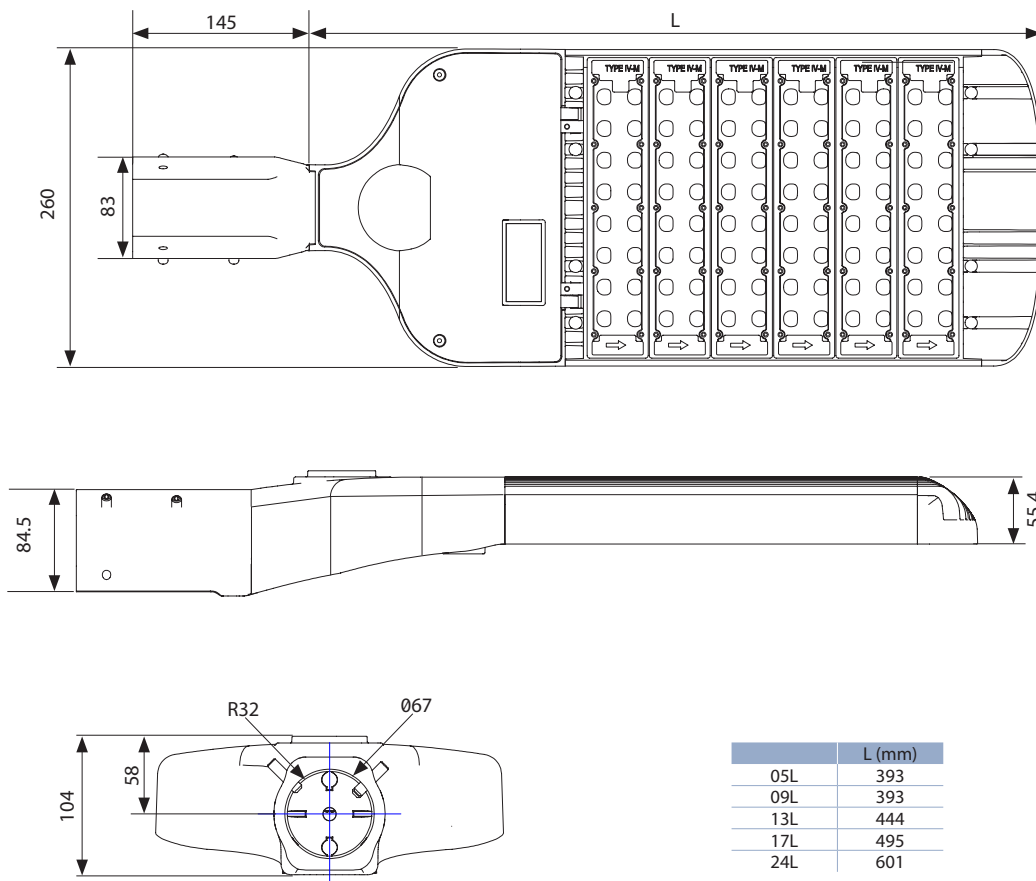
Features

- Slim, **elegant design**
- Dark sky friendly**, no upward light
- Lightweight** and low windage
- Highly **Energy Efficient**
- 130,000 maintenance free hours @ 25°C (L70)**

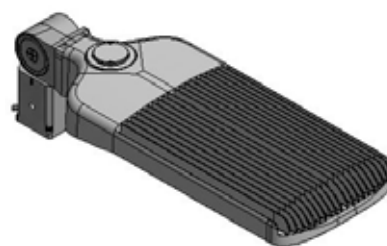
Std. Cat No.	Delivered Output	Power Consumption	Ambient °C	Weight
SL2I/05L/LE	4835 lm	40W	-40 to +55	5.0kg
SL2I/09L/LE	8923 lm	75W	-40 to +55	5.0kg
SL2I/13L/LE	13226 lm	120W	-40 to +55	6.0kg
SL2I/17L/LE	17355 lm	150W	-40 to +55	6.5kg
SL2I/24L/LE	24318 lm	200W	-40 to +55	8.0kg

Options - Suffix to Catalogue No.

/SF	Slip Fitter mount (40-55mm OD column)	/WM	Wall mount
-----	---------------------------------------	-----	------------



Wall Mount



Slip Fitter (Post Top) Mount

Contact Details

United Kingdom

Chalmit PO Box 5575 Glasgow G52 9AP UK
Tel: +44 (0) 141 882 5555 Fax: +44 (0) 141 883 3704 Email: info@chalmit.com

Middle East

Building No. 5EA Office No. G03
Dubai Airport Free Zone (DAFZ) PO Box 23529 Dubai UAE
Tel: +971 (0)4 609 1222 Email: middle-east@chalmit.com

Asia Pacific

130 Joo Seng Road #03-02 Olivine Building Singapore 368357
Tel: +65 6282 2242 Fax: +65 6284 4244 Email: asia-pacific@chalmit.com

Korea

512 Hyosung Intellian 681-3 Deungchon Dong
Kangseo-Ku Seoul 157-030 Korea
Tel: +82 2 2063 3719 Fax: +82 2 2603 7386
Mob: +82 10 9977 6349 Email: korea@chalmit.com

China

Room H/I 18F No. 728 Pudong Avenue
Shanghai International Ocean and Finance Building Shanghai 200120 P.R. China
Tel: (86 21) 3392 6550 ext. 318 Fax: (86 21) 3392 6551
Mob: +(86 139) 1829 4175 6349 Email: china@chalmit.com



www.chalmit.com

