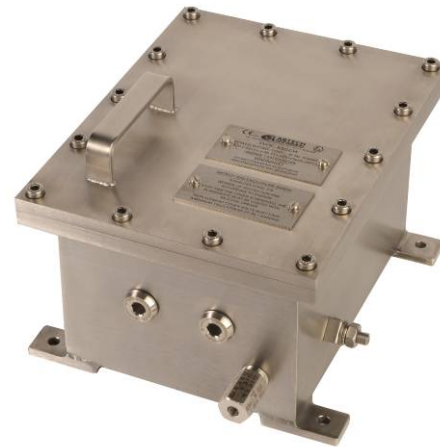


SSD Stainless Steel Enclosures

The SSD is an Ex d enclosure designed to house electrical and electronic apparatus within Zone 1 and 21 hazardous areas. Its Flameproof design allows potentially sparking equipment to be safely installed in areas where explosive gasses or dust may be present.

The use of 316L marine grade stainless steel ensures maximum environmental protection for harsh operating conditions.



IP66



Product Specification

Apparatus Type	Flameproof Enclosure Range
Ingress Protection	IP66 to EN60529
Material	316 Stainless Steel enclosure, cover & hinges complete with 316 Stainless Steel fasteners
Mounting Plate	316 Stainless Steel
Components	Switches, Breakers, RCD units, Indicator lamps, motor controllers, etc.
Voltage Rating	Up to 24kV ac or 1500V dc
Cable Entry	Variable Metric or NPT entry combinations on any of the 4 sides
Mounting	Via rear mounting lugs (see dimensional data overleaf)
Certification	
Area Classification	Group IIB Category 2 GD (Zone 1/21 and 2/22), <i>Option:</i> Group IIB+ H ₂ Category 2 GD (Zone 1/21 and 2/22)
Type of Protection	Ex db (Flameproof), Ex tb (Dust), Ex db [ia/ib] (Intrinsically Safe)*
Apparatus Coding	Ex db IIB or IIB+H ₂ T* Gb, Ex tb* IIIC T* °C Db Ex db [ia Ga] IIB or IIB+H ₂ T6 Gb, Ex tb [ia Da] IIIC T85 °C Db Ex db [ib Gb] IIB or IIB+H ₂ T6 Gb, Ex tb [ib Db] IIIC T85 °C Db
Ambient Temperature	-20°C ≤ Tamb ≤ 40°C (with options for +45°C, +50°C, +55°C and +60°C)
Certificate Number	INERIS 13ATEX0019X / IECEx INE14.0061X

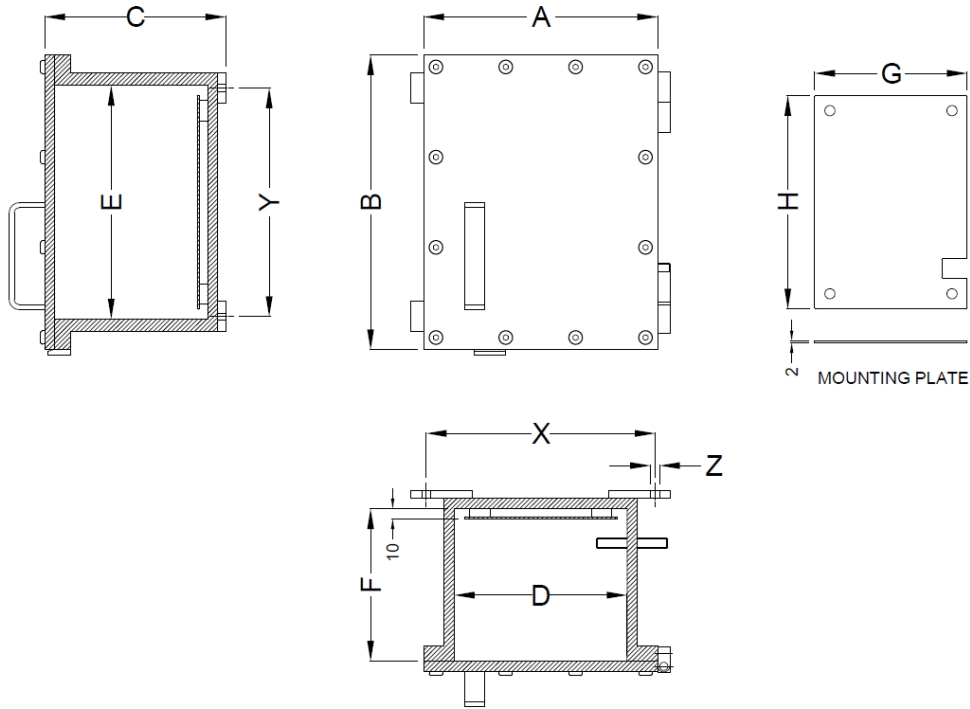
* - Type of protection and temperature class subject to inspection of internal components

Power Dissipation Ratings

SSD Model	Max Dissipated Power (W)**					
	T6 / T85°C		T5 / T100°C		T4 / T135°C & T3 / T200°C	
	Ta +40°C	Ta +60°C	Ta +40°C	Ta +60°C	Ta +40°C	Ta +60°C
SSD113	18	12	25	16	50	27
SSD234	42	27	58	38	94	61
SSD434-A	68	44	93	60	152	99
SSD434-B	68	44	93	60	152	99
SSD435	51	33	83	54	135	88
SSD445-A	74	48	101	66	166	108
SSD445	74	48	101	66	166	108
SSD546	112	73	152	99	249	162
SSD556-A	118	77	161	105	263	171
SSD556-B	118	77	161	105	263	171
SSD646	123	80	167	109	273	177
SSD656	152	99	207	135	338	220
SSD667	217	141	296	192	483	314
SSD768	470	306	641	417	1047	681

** - Refer to certificates for full details

Enclosure Dimensions



SSD Model	EXTERNAL Dimensions (mm)			INTERNAL Dimensions (mm)			FIXING Dimensions (mm)			Mounting Plate (mm)		Weight (kg)
	A	B	C	D	E	F	X	Y	Z	G	H	
SSD113	150	180	106	100	130	80	140	130	7	90	120	11
SSD234	230	290	178	170	230	150	225	225	9	150	210	23
SSD434-A	230	400	180	170	340	150	225	335	9	150	320	30
SSD434-B	280	400	180	220	340	150	275	335	9	200	320	34
SSD435	270	460	220	210	400	190	265	395	9	190	380	42
SSD445-A	310	410	220	250	350	190	315	345	9	230	330	42
SSD445	370	450	224	310	390	190	365	385	9	290	370	61
SSD546	340	600	244	270	530	210	325	525	11	250	510	70
SSD556-A	440	500	250	370	430	210	425	425	11	350	410	83
SSD556-B	470	560	250	400	490	210	455	485	11	380	470	88
SSD646	330	710	290	250	630	250	305	625	11	230	610	104
SSD656	420	770	297	340	690	250	395	685	13	320	670	146
SSD667	530	780	305	450	700	250	510	675	15	430	680	207
SSD768	670	1120	450	570	1020	390	650 /550	1000 /1100	15	550	1000	436

All dimensions relate to enclosure with external flange. Other sizes available on request.

Options

MS	Mild Steel
H2	Group IIB+ H ₂ version
RALxxxx	Paint Finish (Any RAL colour) <i>Note: Maximum paint thickness limited to 2mm for IIB and 0.2mm for IIB+H₂ areas</i>
INT	Internal Flange
W	Window options available for window fitted to cover or sides
BD	Breather Drain (Stainless Steel M20 or 1/2" NPT)

Add the required suffix to the product reference, for example SSD234RAL7001

SSD-AL Aluminium Enclosures

The SSD-AL is an aluminium Ex d Flameproof enclosure designed to house and provide maximum protection for electrical and electronic apparatus within Zone 1 and 21 hazardous areas.

As standard the SSD-AL comes painted externally to RAL7001 Grey.



IP66



Product Specification

Apparatus Type	Flameproof Enclosure Range
Ingress Protection	IP66 to EN60529
Material	Aluminium enclosure, cover & hinges complete with 316 Stainless Steel fasteners
Mounting Plate	Galvanized Steel
Components	Switches, Breakers, RCD units, Indicator lamps, motor controllers, etc.
Voltage Rating	Up to 24kV ac or 1500V dc
Cable Entry	Variable Metric or NPT entry combinations on any of the 4 sides
Mounting	Via adjustable rear mounting feet (see dimensional data overleaf)
Certification	
Area Classification	Group IIB Category 2 GD (Zone 1/21 and 2/22), <i>Option:</i> Group IIB+ H ₂ Category 2 GD (Zone 1/21 and 2/22)
Type of Protection	Ex db (Flameproof), Ex tb (Dust), Ex db [ia/ib] (Intrinsically Safe)*
Apparatus Coding	Ex db IIB or IIB+H ₂ T* Gb, Ex tb* IIIC T* °C Db Ex db [ia Ga] IIB or IIB+H ₂ T6 Gb, Ex tb [ia Da] IIIC T85 °C Db Ex db [ib Gb] IIB or IIB+H ₂ T6 Gb, Ex tb [ib Db] IIIC T85 °C Db
Ambient Temperature	-20°C ≤ Tamb ≤ 40°C (with options for +45°C, +50°C, +55°C and +60°C)
Certificate Number	INERIS 13ATEX0019X / IECEx INE14.0061X

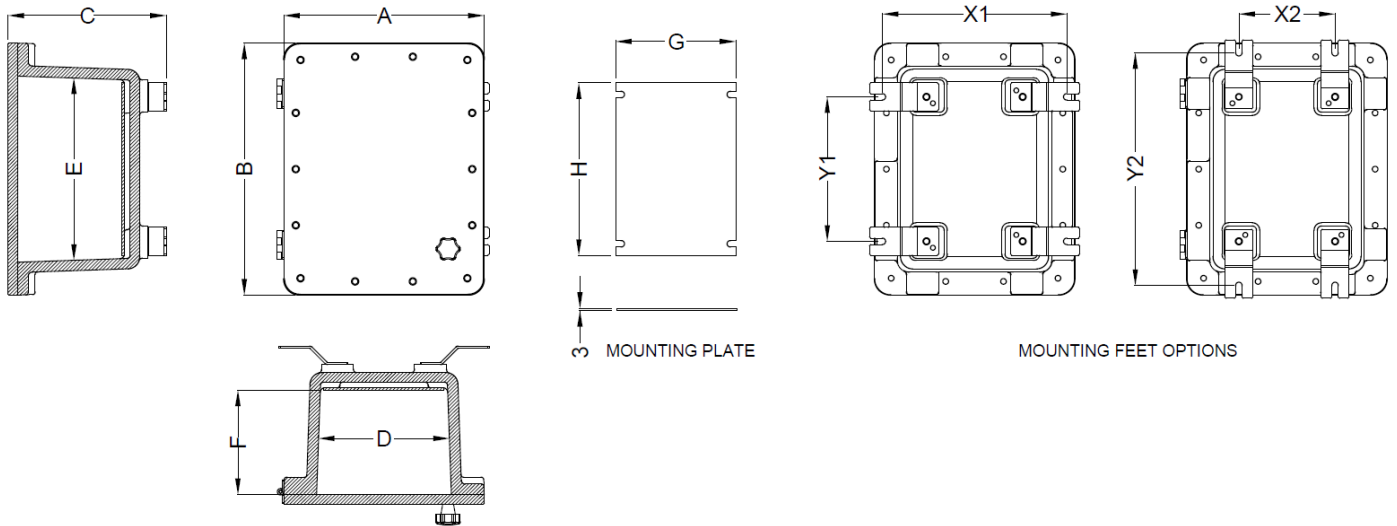
* - Type of protection and temperature class subject to inspection of internal components

Power Dissipation Ratings

SSD Model	Max Dissipated Power (W)**					
	T6 / T85°C		T5 / T100°C		T4 / T135°C & T3 / T200°C	
	Ta +40°C	Ta +60°C	Ta +40°C	Ta +60°C	Ta +40°C	Ta +60°C
SSD-AL224	34	22	47	31	76	49
SSD-AL425	67	44	92	60	149	97
SSD-AL446	88	57	120	78	197	128
SSD-AL456	109	71	149	97	243	158
SSD-AL566	149	97	203	132	332	216
SSD-AL656	152	99	207	135	338	220
SSD-AL666	191	124	261	170	426	277
SSD-AL667	217	141	296	192	483	314

** - Refer to certificates for full details

Enclosure Dimensions



SSD Model	EXTERNAL Dimensions (mm)			INTERNAL Dimensions (mm)			FIXING Dimensions (mm)			Mounting Plate (mm)		Weight (kg)
	A	B	C	D	E	F	X1/X2	Y1/Y2	Z	G	H	
SSD-AL224	250	314	197	163	227	140	230/ 120	180/ 290	8	150	215	10
SSD-AL425	247	425	252	163	340	191	238/ 128	290/ 400	8	150	321	15
SSD-AL446	412	489	281	306	383	209	392/ 255	335/ 472	10	290	360	34
SSD-AL456	493	532	278	384	422	208	457/ 320	360/ 497	10	358	394	40
SSD-AL566	540	594	337	425	479	238	535/ 360	400/ 575	12	391	446	78
SSD-AL656	445	833	340	333	718	241	425/ 250	630/ 805	12	294	670	87
SSD-AL666	610	832	340	497	714	240	580/ 405	630/ 805	12	450	670	119
SSD-AL667	612	832	436	495	713	337	580/ 405	630/ 805	12	450	670	130

Options

H2	Group IIB+ H ₂ version
RALxxxx	Special Paint Finish (Any RAL colour) Note: Maximum paint thickness limited to 2mm for IIB and 0.2mm for IIB+H ₂ areas
W	Window options available for window fitted to cover or sides
BD	Breather Drain (Stainless Steel M20 or 1/2" NPT)

Add the required suffix to the product reference, for example SSD-AL224RAL5015